



480 2nd Street

Highlights

Ideal South Park location near Caltrain

Some Suites with Views

Walk Score 95

Various High-Speed Internet Options Available



OFFICE FOR LEASE

South Park



Suite 302

Size

+/- 3,289 Sq. Ft.

Rent

\$1.85 PSF/Month Full Service

Term

Flexible

Highlights

Three (3) Private Offices

Mostly Open Floor Plan

Some Views

Abundant Natural Light



Suite 303

Size

+/- 1,067 Sq. Ft.

Rent

\$2.00 psf/Month Full Service

Term

Flexible

Highlights

Open Floor Plan

One (1) Conference Room

Skylight Provides Good Natural Light



Suite 100

Size

+/- 6,639 Sq. Ft.

Rent

\$1.65 psf/Month Full Service

Highlights

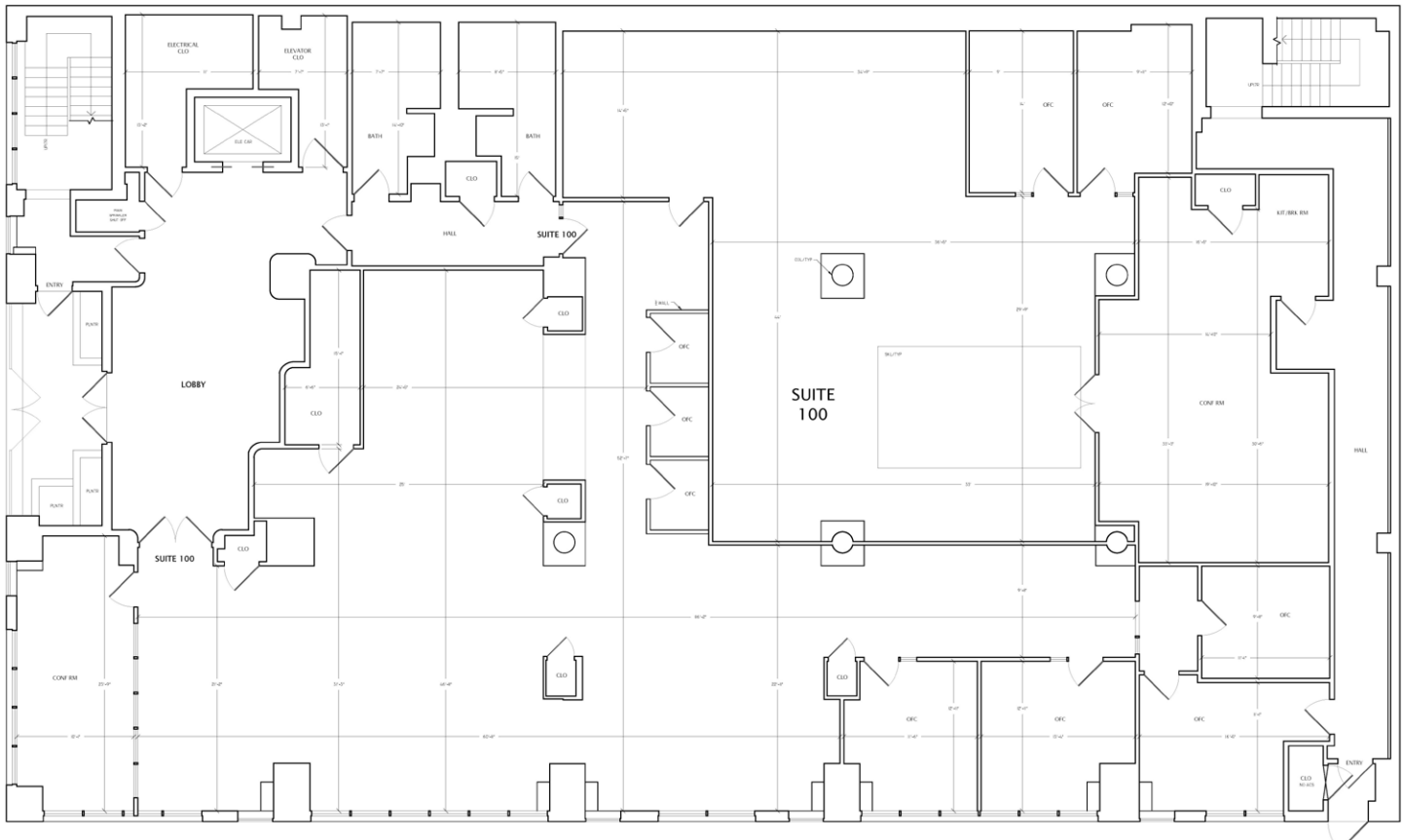
Nine (9) Private Offices

Two (2) Conference Rooms

Mostly Open Floor Plan

Term

Flexible



Suite 301

Size

+/- 2,863 Sq. Ft.

Rent

\$1.85 psf/Month Full Service

Highlights

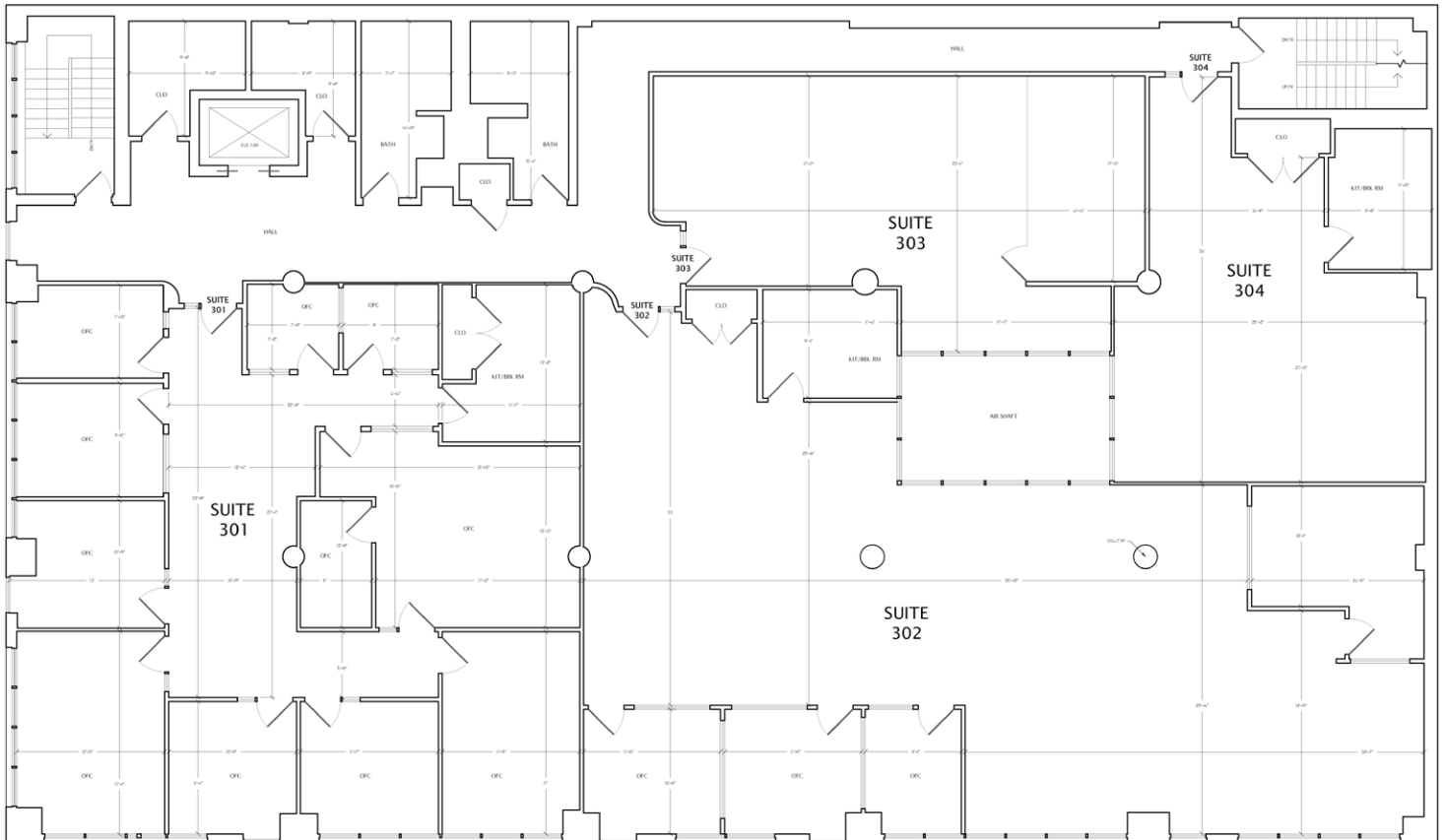
Eleven (11) Private Offices

Large offices/Conference Rooms

Kitchenette

Term

Flexible



Suite 304

Size

+/- 1,031 Sq. Ft.

Rent

\$1.65 psf/Month Full Service

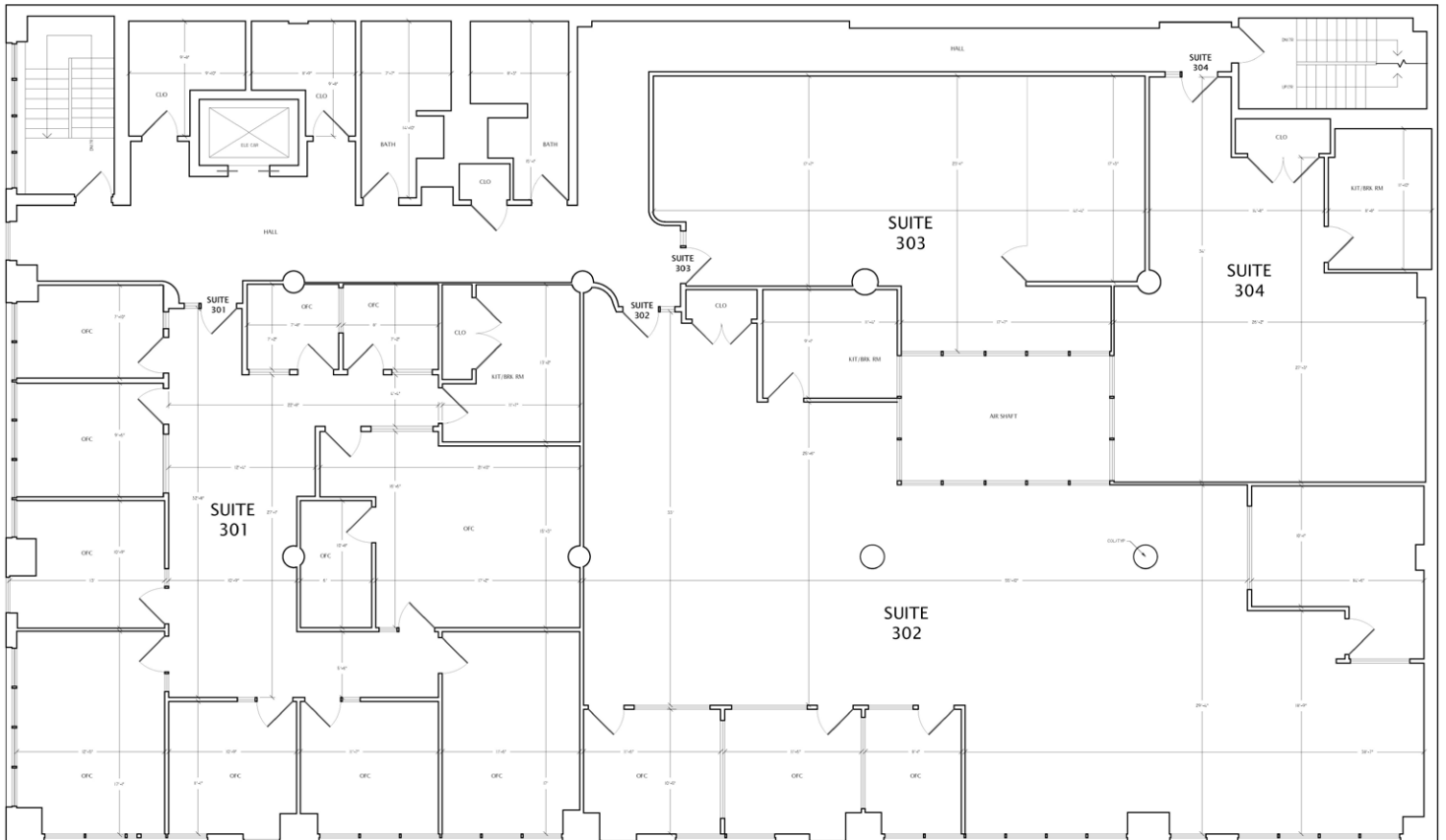
Highlights

Open Floor Plan

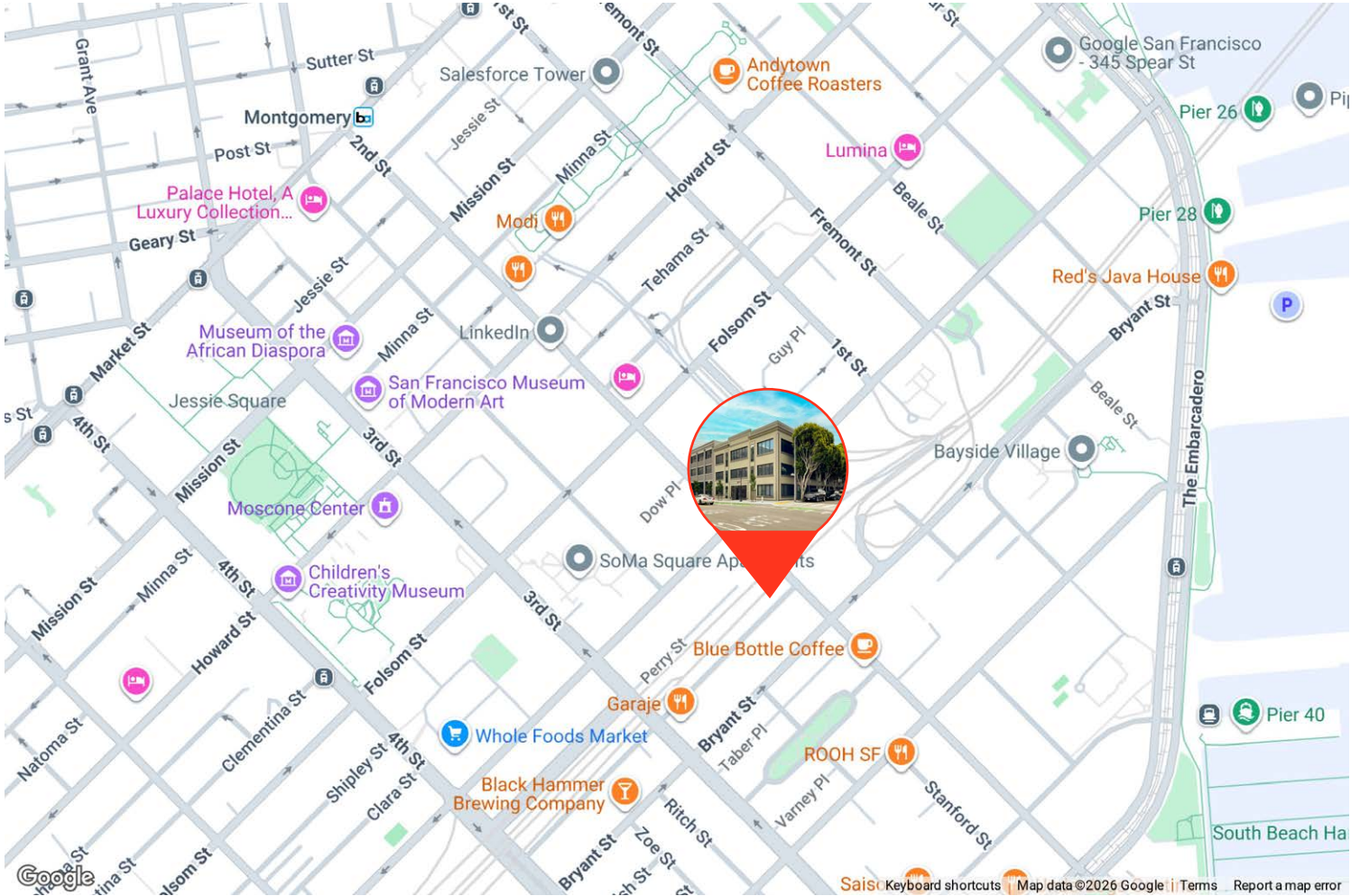
Kitchenette

Term

Flexible



Neighborhood | South Park



South Park is a charming neighborhood located in the South of Market district of San Francisco. It is a popular area for office tenants due to its central location and proximity to many major businesses and tech companies. The area has a mix of both modern and historic buildings, with many former warehouses and factories having been converted into trendy office spaces. The neighborhood is home to a number of great restaurants and cafes, making it a convenient location for employees to grab a bite to eat during the workday. South Park has easy access to Muni, BART lines and the Caltrain. Easy walking distance to the Financial District and the Embarcadero.

URBANGROUP
OFFICE

PIERCE CAVALLERO

Office: 415.863.1775

Direct: 650.740.4416

Email: pierce@urbangroupsf.com

DRE 01964170