



# 210 Mississippi St

## Size

+/- 3,573 sq ft

## Rent

\$8,000/Month IG

## Highlights

Turnkey creative office space

Perfect Potrero Hill Location

1 Private Office

1 Conference Room

1 Private Office

Open Floor Plan

**URBANGROUP**  
REAL ESTATE

OFFICE

**CREATIVE OFFICE  
SPACE FOR LEASE**

Potrero Hill

# 210 Mississippi Street

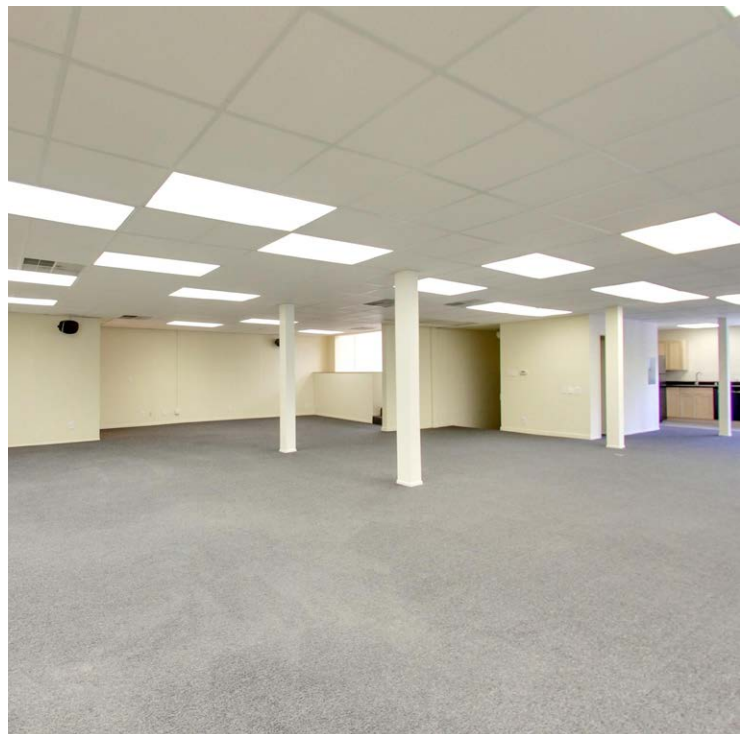


2nd floor office with private entry foyer that leads to mostly open floor plan plus 1 private office, 1 large conference room, and kitchenette. Other features include HVAC & Security System. Highly sought after Potrero Hill location, at Mariposa and Mississippi.

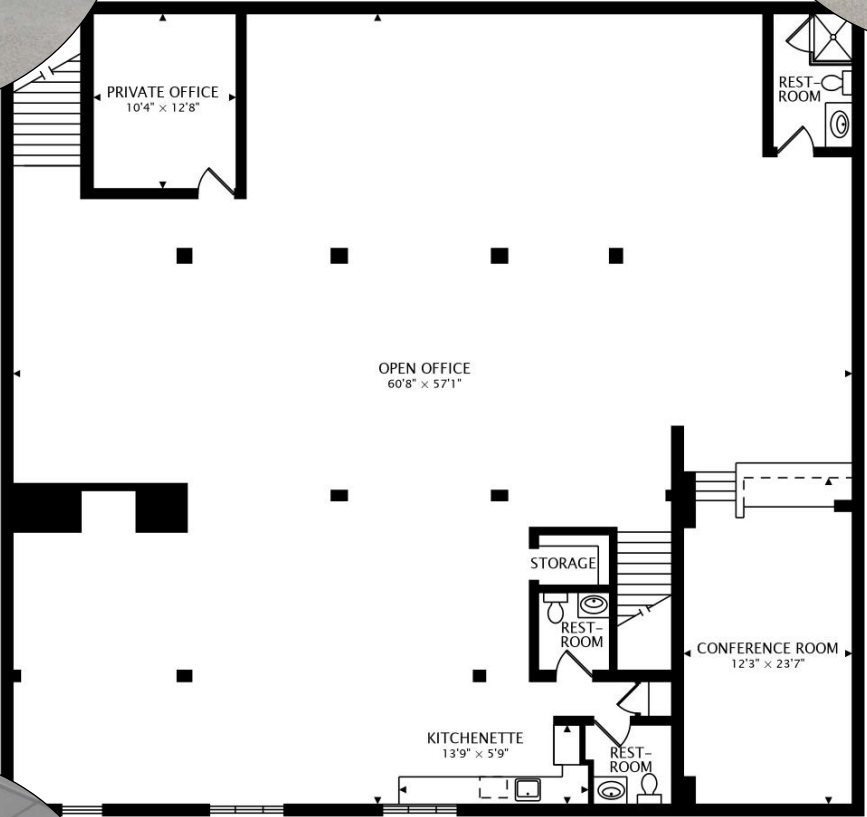




With an ideal Walk Score of 95, 210 Mississippi sits at the intersection of the Design District, Mission Bay, Dogpatch and Potrero Hill. It is a block away from 18th Street's famed eateries and shops, including Plow, Farley's and Hazel's Kitchen among others. It is within easy walking distance to the T third (Mariposa) stop at UCSF Mission Bay, as well as 22nd Street Commuter Rail. Easy access (2 Blocks) to I-280.



# Floor Plan - Second Level

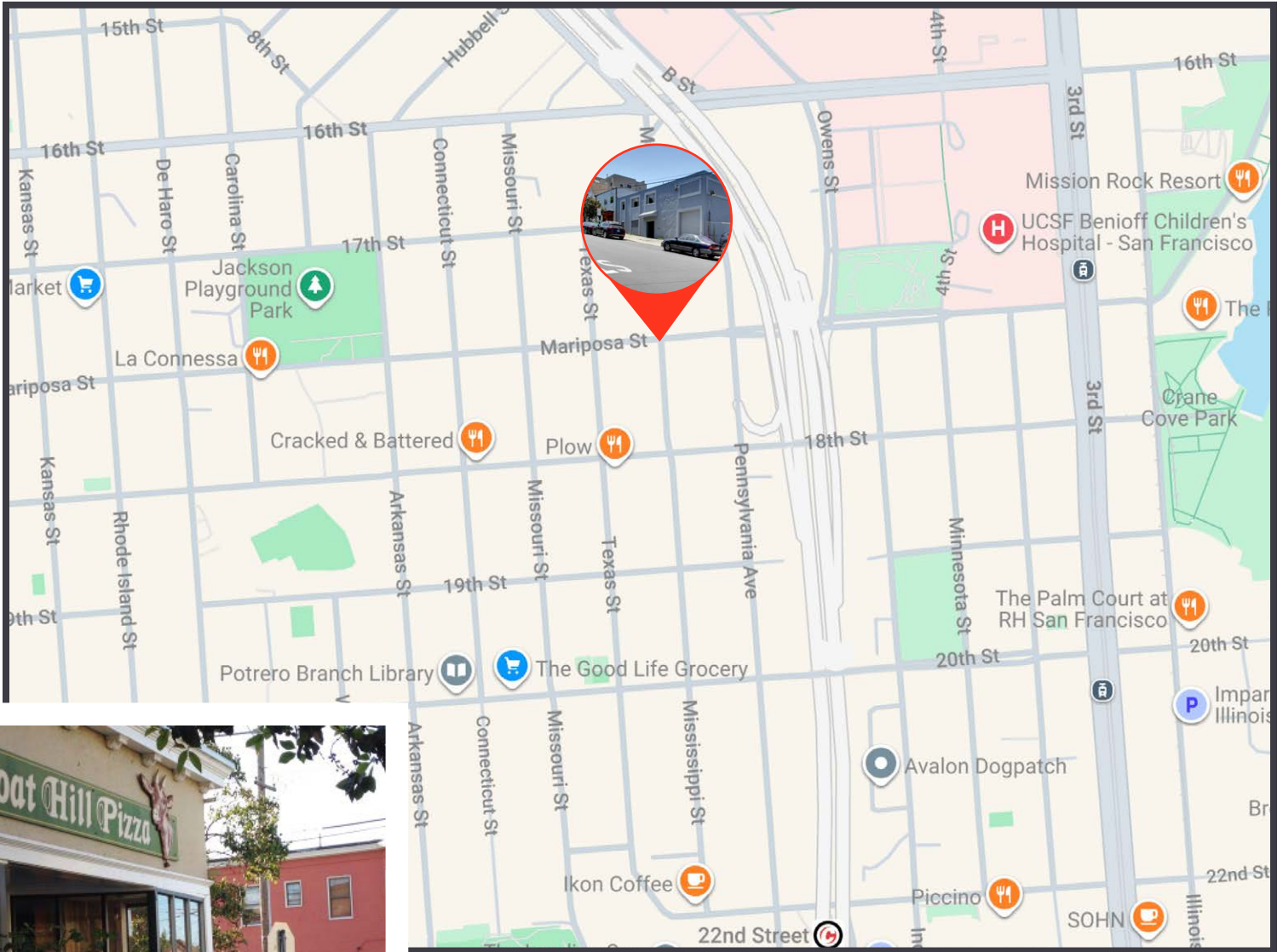


+/- 3,573 sq ft



The floor plans shown should not be relied on as representation, expressed or implied. Floor plans and square footage are approximate and may be more or less than the actual size or design. Prospective buyers are advised to verify all measurements in field using their own professionals.

# The Neighborhood



Potrero Hill's steep roads, colorful rows of homes, and small-town quality feel make it popular with those who enjoy full access to the bustling city but prefer a quiet place to lay their heads. The main shopping corridor, 18th Street, has quaint eateries and shops. On the neighborhood's eastern edge, industrial-cool Dogpatch, with hip bars and eateries, runs along the waterfront.

**URBANGROUP**  
REAL ESTATE

OFFICE

**ROBERT KIRSTEN**

Office: 415.863.1775

Direct: 415.244.4046

Email: [robert@urbangroupsf.com](mailto:robert@urbangroupsf.com)

DRE 01928014