

241 10th Street

South of Market



Office/Retail for Lease
+/- 1,355 Sq Ft

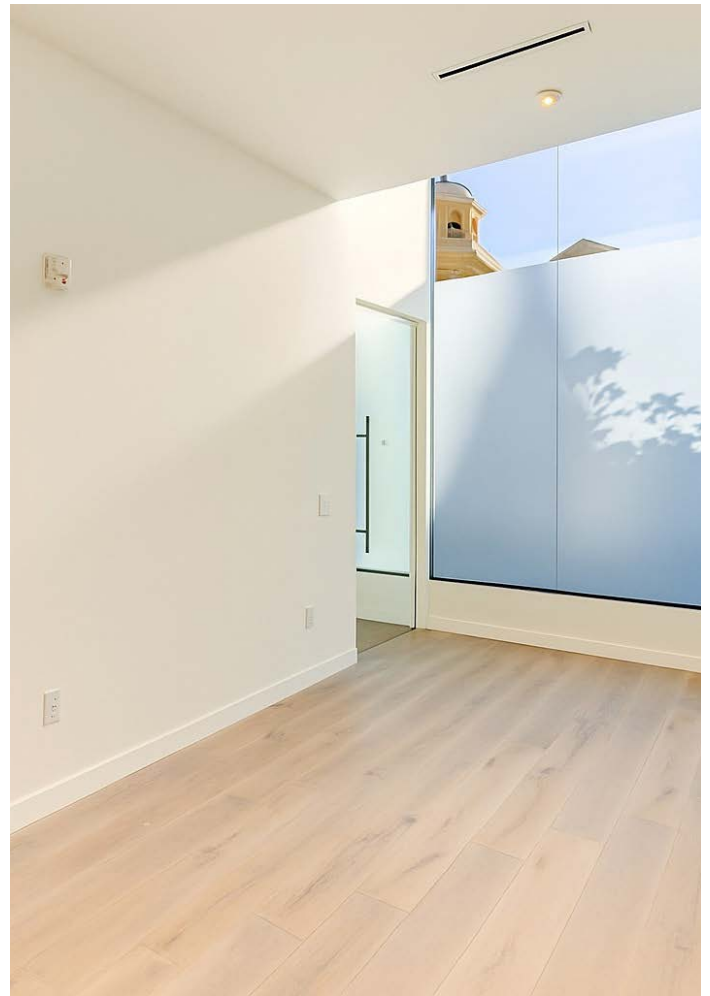
URBANGROUP
REAL ESTATE

The Building

241 10th Street is ideally located in the heart of SOMA, surrounded by a vibrant community of creative businesses, innovative studios, and professional offices. The central location also offers easy access to popular restaurants, cafés, and neighborhood amenities, with excellent connectivity to public transportation and major freeways.

The space is part of a newly constructed building and showcases soaring ceilings and oversized windows that flood the interior with natural light. It features two private conference rooms, a modern kitchenette with stainless steel appliances, an ADA restroom, and dedicated storage.

An open layout, sleek finishes, and abundant light make this space a perfect fit for creative businesses, design firms, and professional offices seeking a polished yet flexible environment in one of the city's most dynamic neighborhoods.



The Perks

- Modern new construction with sleek finishes
- Two private conference rooms and kitchenette
- High Ceilings
- Private restroom and dedicate storage
- Abundant natural light
- Prime SOMA location with excellent transit and freeway access

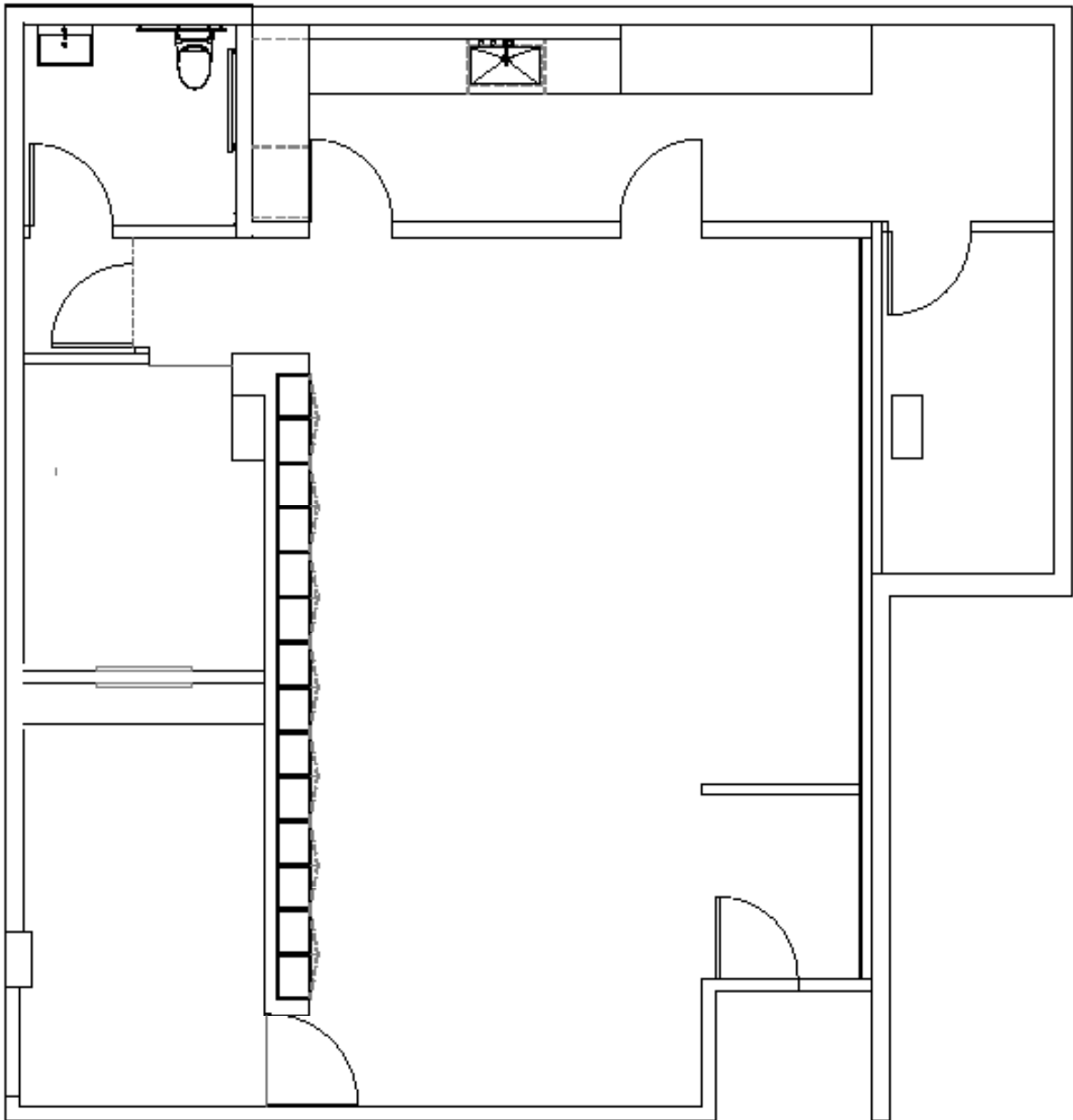




Floorplan

Size: +/- 1,355 SF

Rent: \$2.50 psf/Month IG



The floor plans shown should not be relied on as representation, expressed or implied. Floor plans and square footage are approximate and may be more or less than the actual size or design. Prospective buyers are advised to verify all measurements in field using their own professionals.



Located in the heart of San Francisco's SOMA (South of Market) district, this vibrant neighborhood is a hub for innovation, creativity, and business. With its prime location near downtown, major transit connections, and the Financial District, SOMA offers unmatched accessibility for employees and clients alike. The area is home to a mix of tech startups, design studios, creative agencies, and modern office spaces, alongside a thriving scene of restaurants, cafes, galleries, and event venues. Energetic and forward-thinking, SOMA provides an inspiring environment for collaboration and growth—making this office space an exceptional opportunity to establish a presence in one of the city's most dynamic commercial neighborhoods.

URBANGROUP

ROBERT KIRSTEN

C: 415.244.4046
O: 415.863.1775
robert@urbangroupsf.com
DRE 01928014

LOUIS CORNEJO

C: 415.786.3662
O: 415.863.1775
louis@urbangroupsf.com
DRE 01518102