

PDR Space for Lease in Mission District

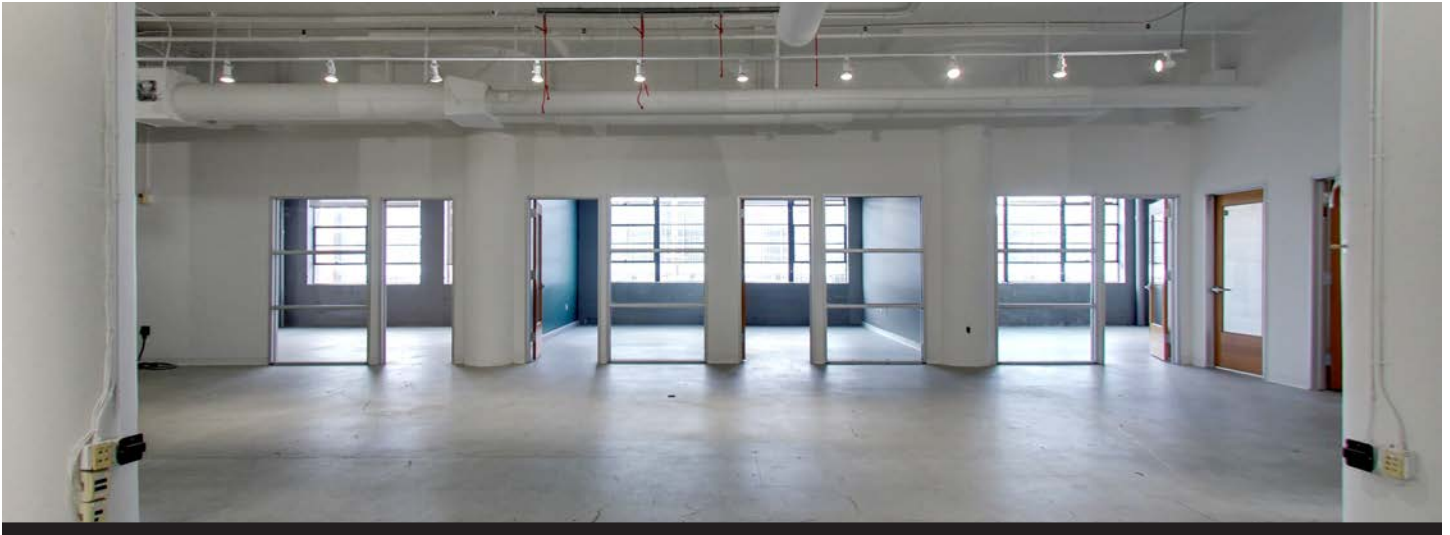


1890
Bryant St
Unit 208

[Click for Virtual Tour](#)

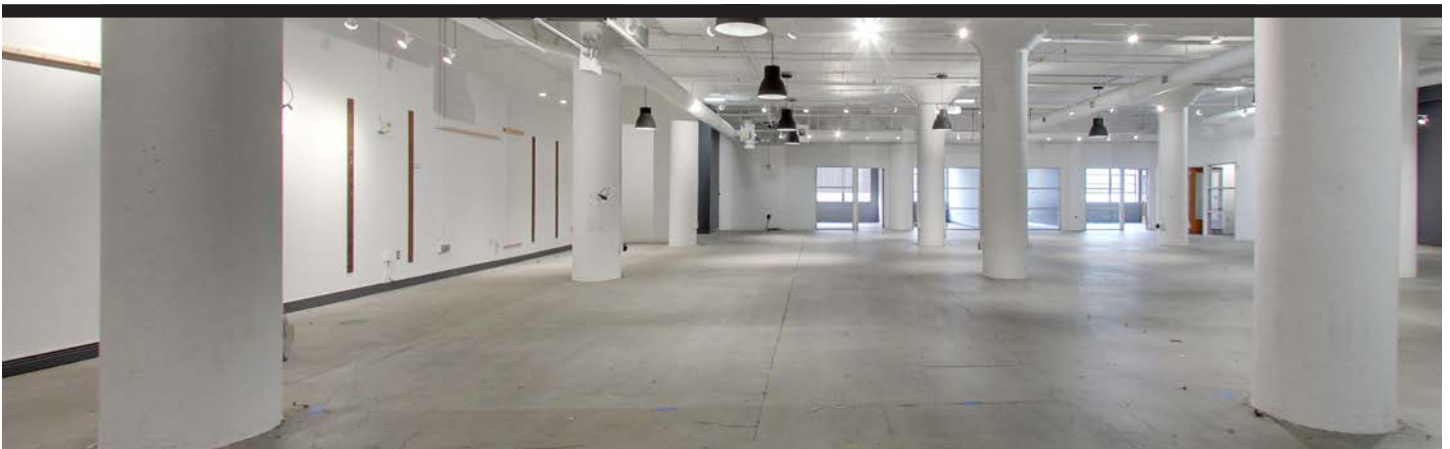
Size: 7,094 square feet
Rent: \$2.00 PSF/ Month IG

URBANGROUP
REAL ESTATE



Highlights:

- + Large Windows Illuminated by Natural Light
- + High Ceilings
- + Open Floor Plan
- + Creative Space
- + Centrally Located
- + Walking Distance to BART, Shops, Restaurants, Bars and Parks
- + Stunning Outdoor Terrace with Remarkable Views of San Francisco

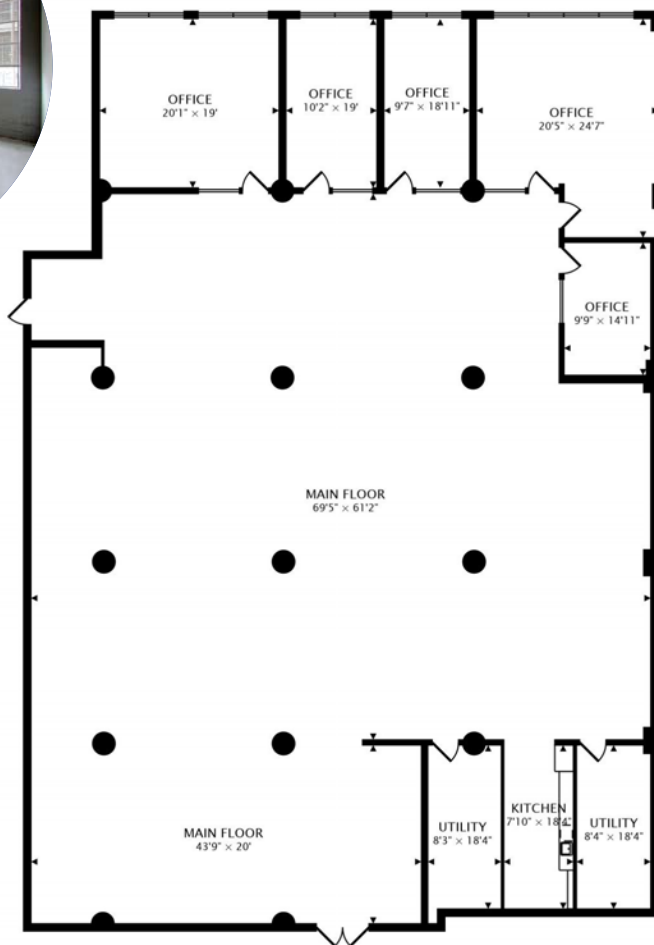


FLOOR PLAN

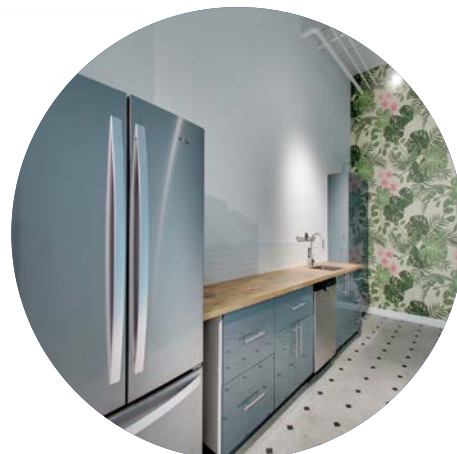
The open floor plan makes this the perfect space for a collaborative team to work and create.



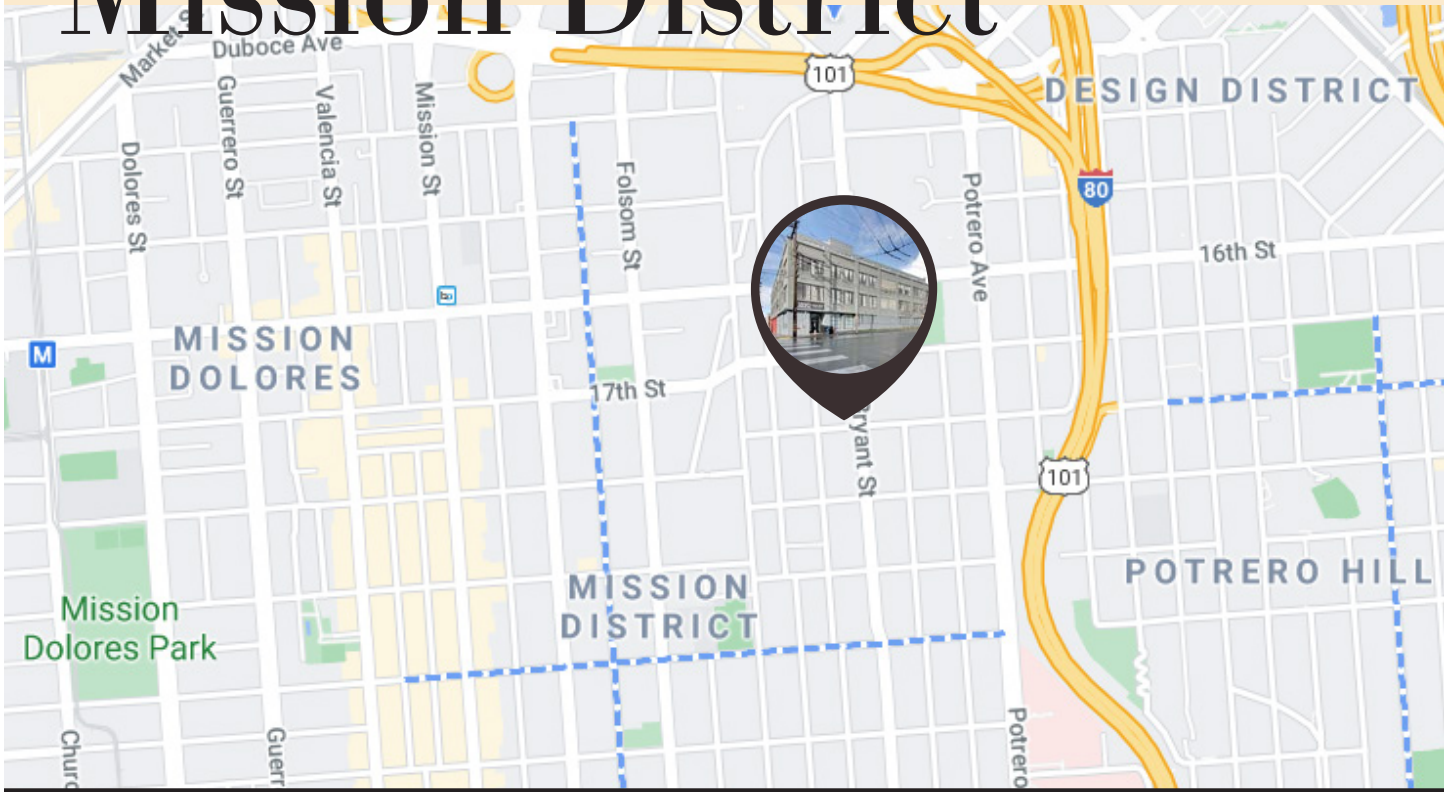
BRYANT STREET



7094 sq ft



Mission District



Become a part of one of San Francisco's most sought-after neighborhoods!

Located in a unique corner of the Mission district, 1890 Bryant Street neighbors many popular restaurants and shops including San Francisco icons Heath Ceramics and Tartine Bakery. Be a part of this historic neighborhood that has become an eclectic mix of factories, health food stores, trendy restaurants, bars, and a vibrant arts scene.

LOUIS CORNEJO

Office: 415.863.1775

Direct: 415.786.3662

Email: louis@urbangroupsf.com

BRE 01518102/01885834

URBANGROUP
REAL ESTATE

The information contained herein has been secured from sources believed to be reliable. It is not guaranteed, however, and should be verified prior to consummating any transaction.