

3407 CALIFORNIA STREET

Laurel Heights, San Francisco

+/- 2,600 Sq Ft Available

Laurel Village Shopping Center



URBANGROUP
RETAIL

Retail For Lease

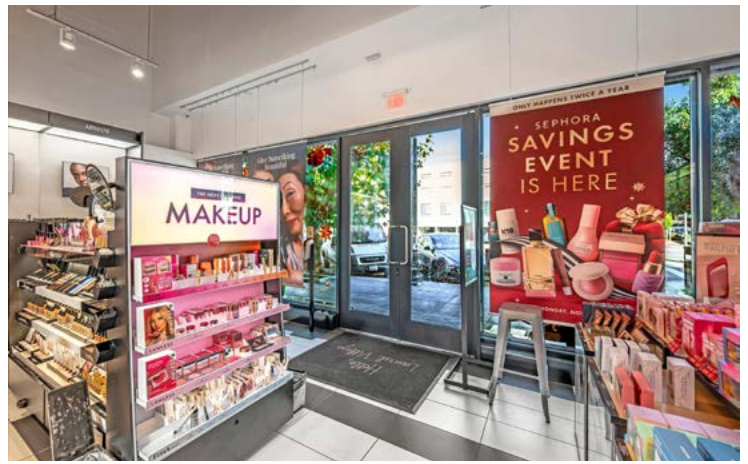
The Perks

- ✓ Ideal Laurel Village Location
- ✓ Fully Updated Space
- ✓ Excellent Visibility
- ✓ Ample On-Site Customer Parking
- ✓ NC-S (Shopping Center) Zoning

Neighboring tenants include Super Duper Burger, Peet's Coffee, Wells Fargo, Emily Joubert, Chico's, Susie Cakes, Blue Mercury, Books Inc, Merrill Investments, Bryan's Market, Starbucks.

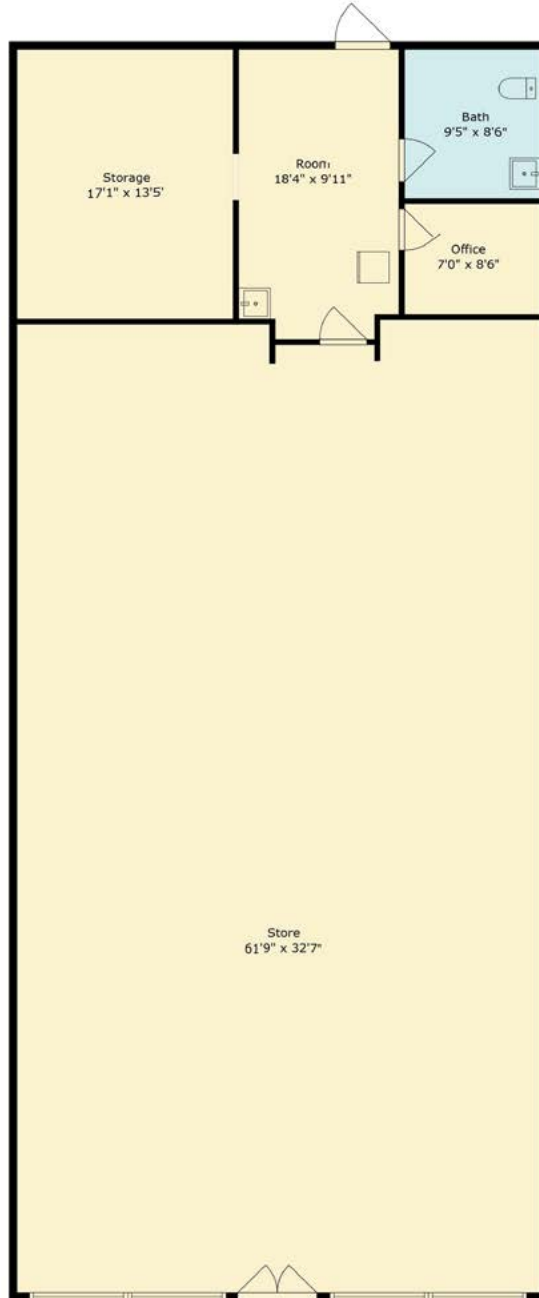
Size: +/- 2,600 Sq Ft

Rent: \$11.00 PSF Triple Net



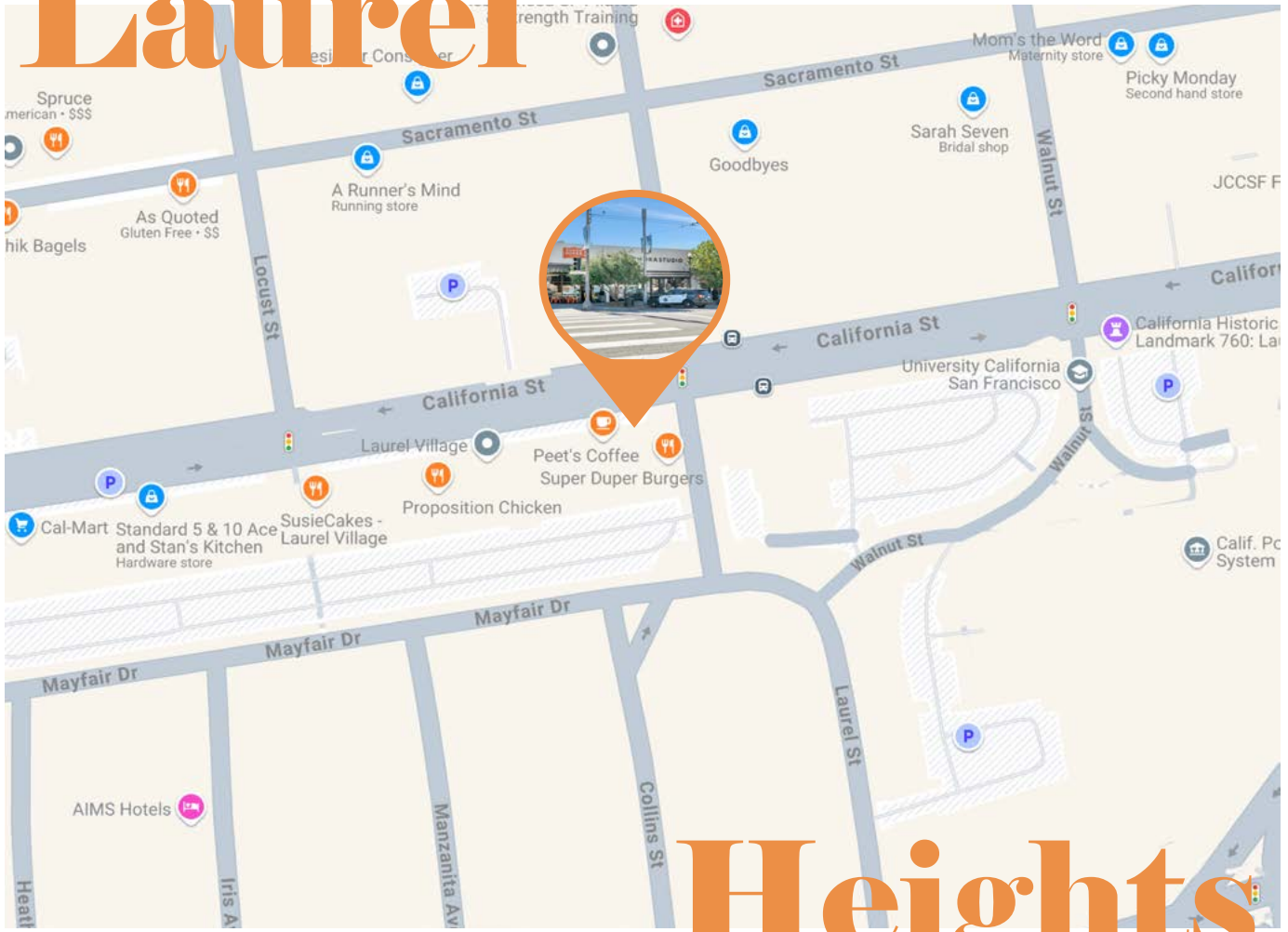
Floor Plans

PARKING LOT



CALIFORNIA STREET

Laurel



Heights

Location. Location. Location.

Laurel Village Shopping Center, nestled along California Street in San Francisco's Laurel Heights neighborhood, serves as a vibrant cornerstone of the local community. Offering a thoughtfully curated mix of independent boutiques and trusted retailers, it provides a convenient and welcoming shopping experience. Favorites include Bryan's Grocery and Cal-Mart Supermarket, both known for their fresh, high-quality produce and specialty items. Sweet Things Bakery, tucked inside Cal-Mart, is a go-to for delightful treats. Local staples like Books Inc., with its cozy children's section, and Standard 5 & 10 Ace, an old-fashioned variety store, add to the village's charm. Dining options range from casual spots like Rigolo and Super Duper to familiar cafes such as Peet's and Starbucks. Laurel Village combines the warmth of a neighborhood center with the convenience of everyday essentials, making it an integral part of the community.

URBANGROUP
RETAIL

LOUIS CORNEJO

C: 415.638.0803

O: 415.786.3662

louis@urbangroupsf.com

DRE 01518102