



490 2nd Street

Lower Level

Size

+/- 8,519 Sq. Ft.

Rent

\$1.50 psf/Month MG

Highlights

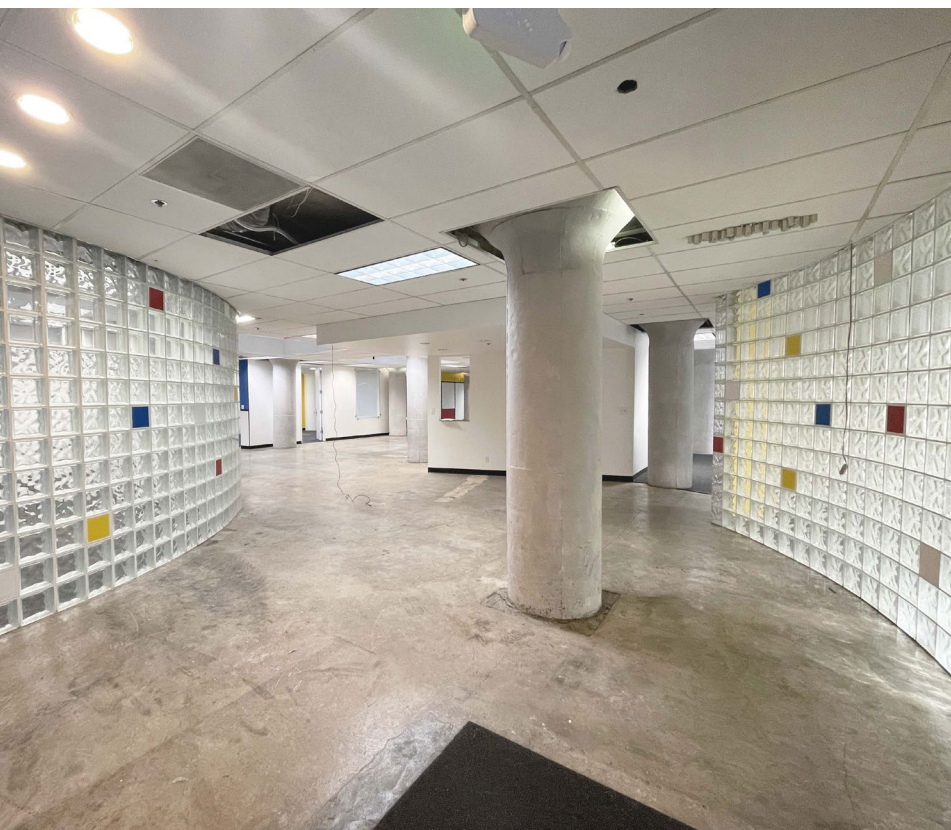
Full Floor Suite

Skylights with Great Natural Light

Mostly Open Floorplan

16 Private Spaces/Conference Rooms

2 Private Callrooms



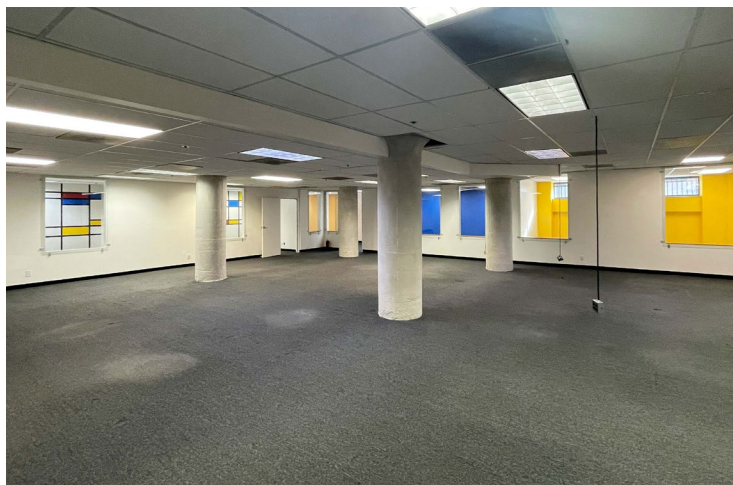
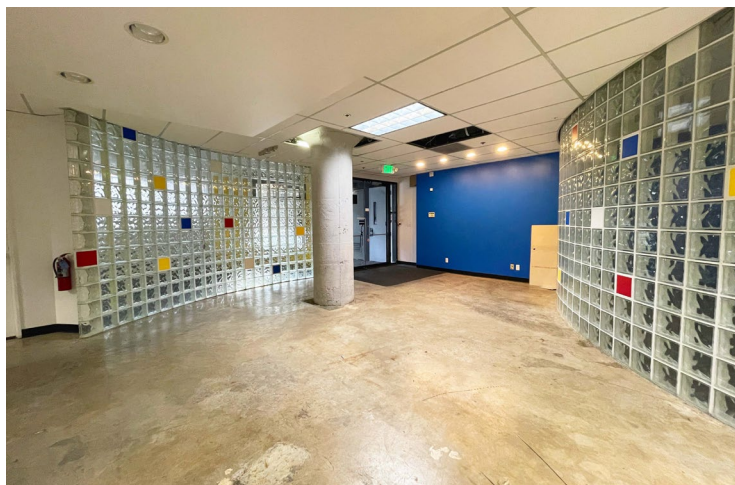
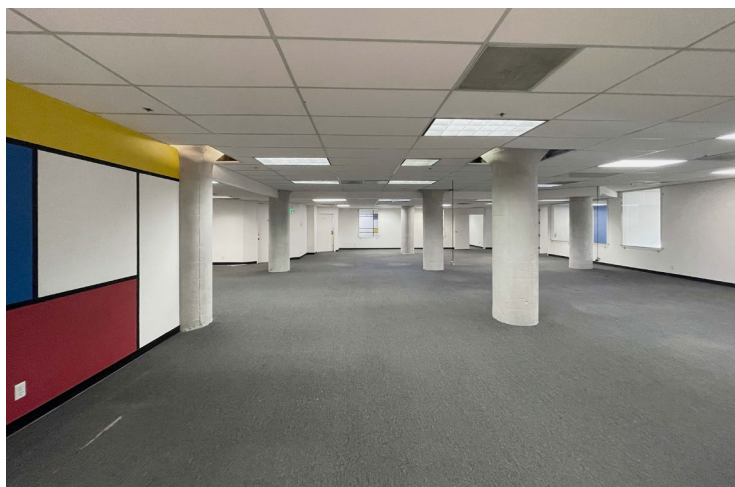
URBANGROUP
REAL ESTATE

OFFICE

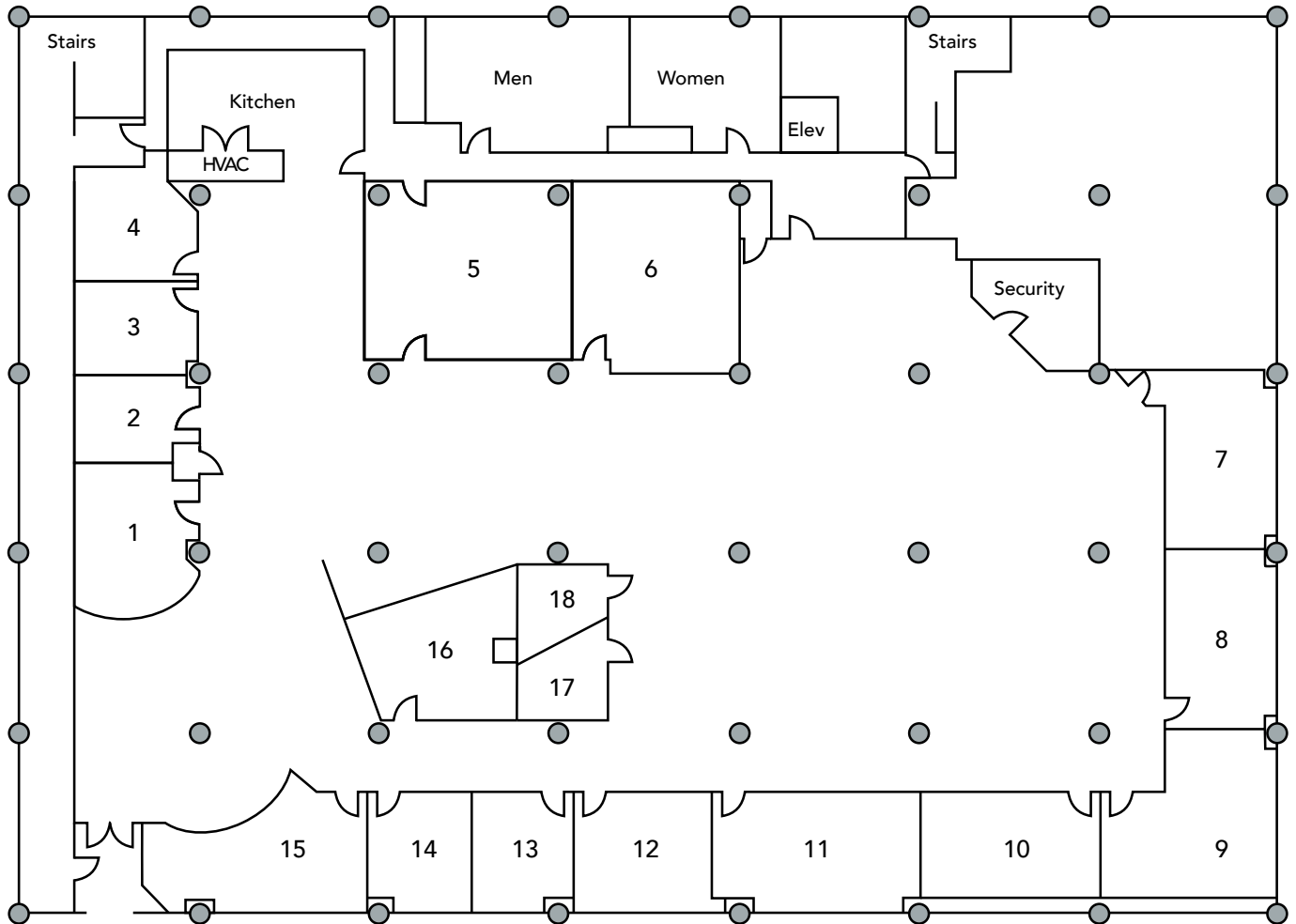
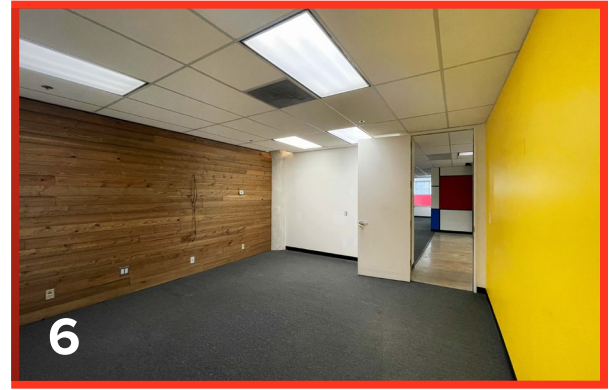
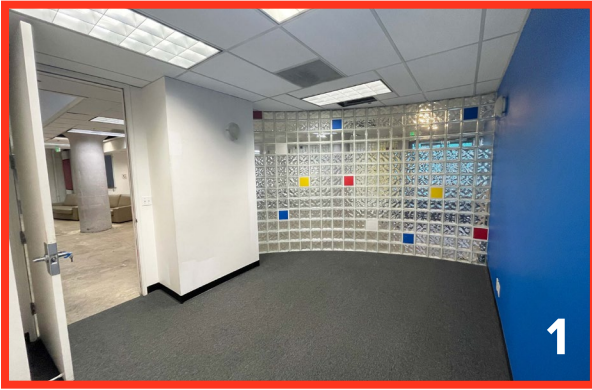
**LARGE CREATIVE OFFICE
FOR LEASE**

South Park

490 2nd Street | Lower Level

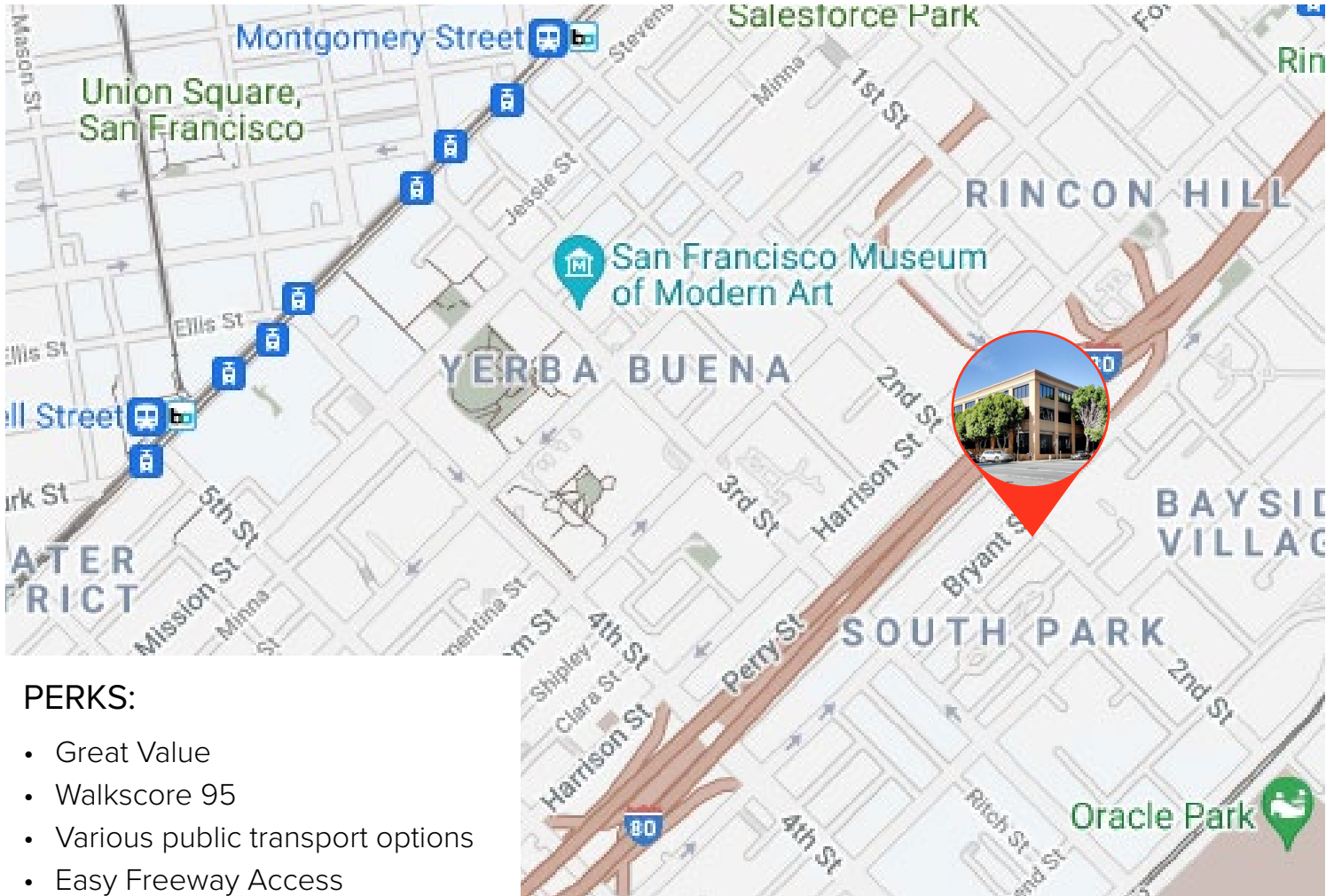


Floor Plan | +/- 8,519 Sq. Ft.



The floor plans shown should not be relied on as representation, expressed or implied. Floor plans and square footage are approximate and may be more or less than the actual size or design. Prospective tenants are advised to verify all measurements in field using their own professionals.

The Neighborhood | South Park



PERKS:

- Great Value
- Walkscore 95
- Various public transport options
- Easy Freeway Access

490 2nd Street is ideally located in Central SoMA, an area bounded by Market Street, Second, Townsend, Sixth District, and South Beach. Central SoMa is one of San Francisco's most accessible regions, served by Caltrain, extensive Muni services and Interstates 80 and 101, with easy access to the Bay Bridge. The immediate area is famous for a number of sites including South Park, Oracle Park, SFMOMA, Moscone Convention Center, and Yerba Buena Gardens.

URBANGROUP
REAL ESTATE

OFFICE

LOUIS CORNEJO

Office: 415.863.1775

Direct: 415.786.3662

Email: louis@urbangroupsf.com

BRE 01518102/01885834