

Medical Office For Lease

1833 Fillmore Street

Lower Pacific Heights, San Francisco

SUITE 301

Size: +/- 4,367 square foot - Full Floor Suite

Rent: \$2.25 PSF MG

LOWER LEVEL

+/- 2,100 square foot - Conference/
Training Room and Medical Storage Facility

Rent: \$1.50 PSF MG

THE AREA

Proximity to MUNI lines: 38, 22, 1

One block from Japantown Parking Garage

Perfectly situated in the Fillmore shopping
district



URBANGROUP
OFFICE

Property Specs

- Full Floor Suite
- 10 Exam Rooms
- 10 Private Offices
- 2 ADA Restrooms
- 1 Copy Room
- Elevator
- Kitchenette
- Large Reception Area



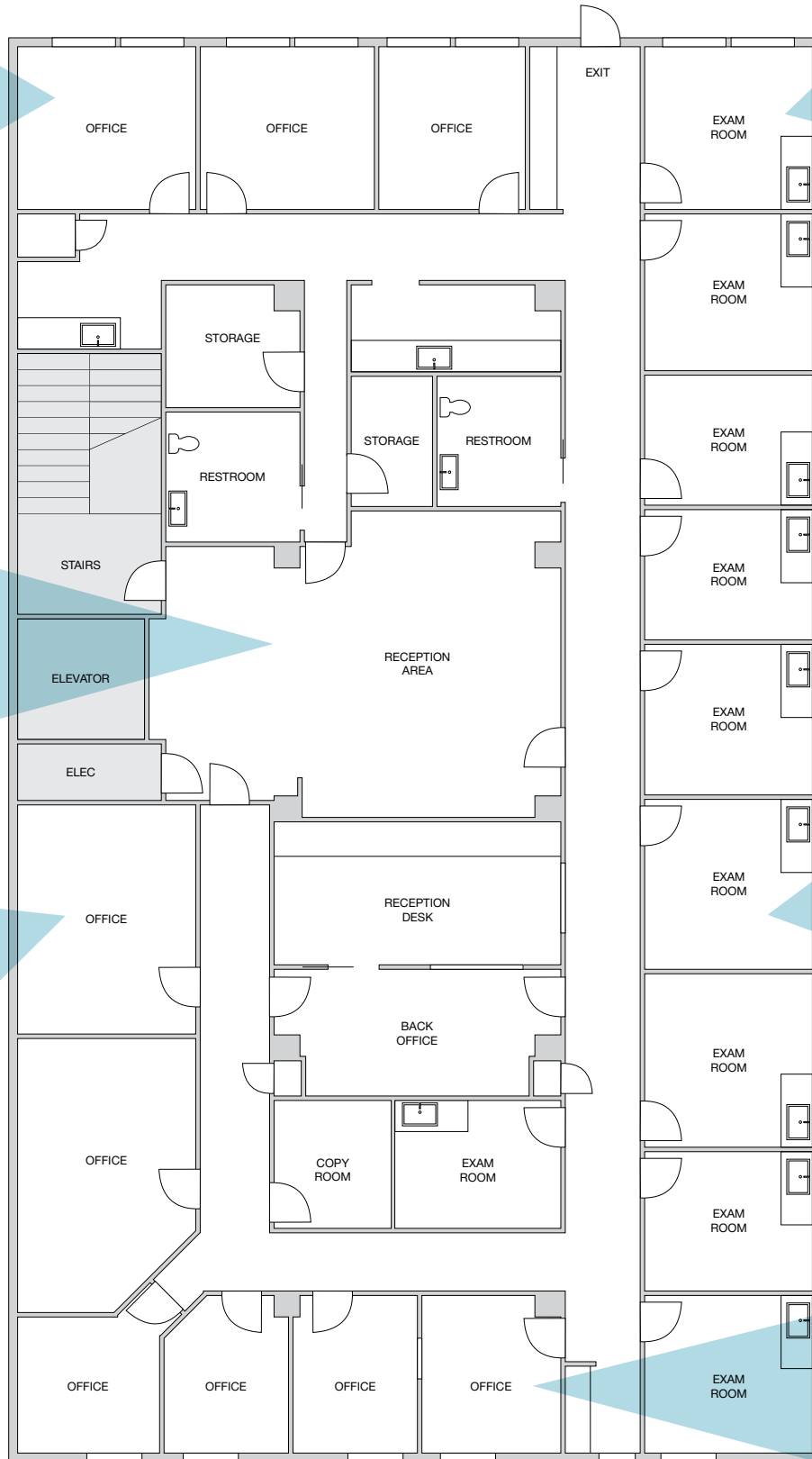
The Perks

- ADA Compliant
- Shared rear patio area
- Beautiful brick accent walls
- Easy access from lobby entrance
- Skylights and large windows create great natural light



Floorplan

Suite 301
+/- 4,367 Sq Ft

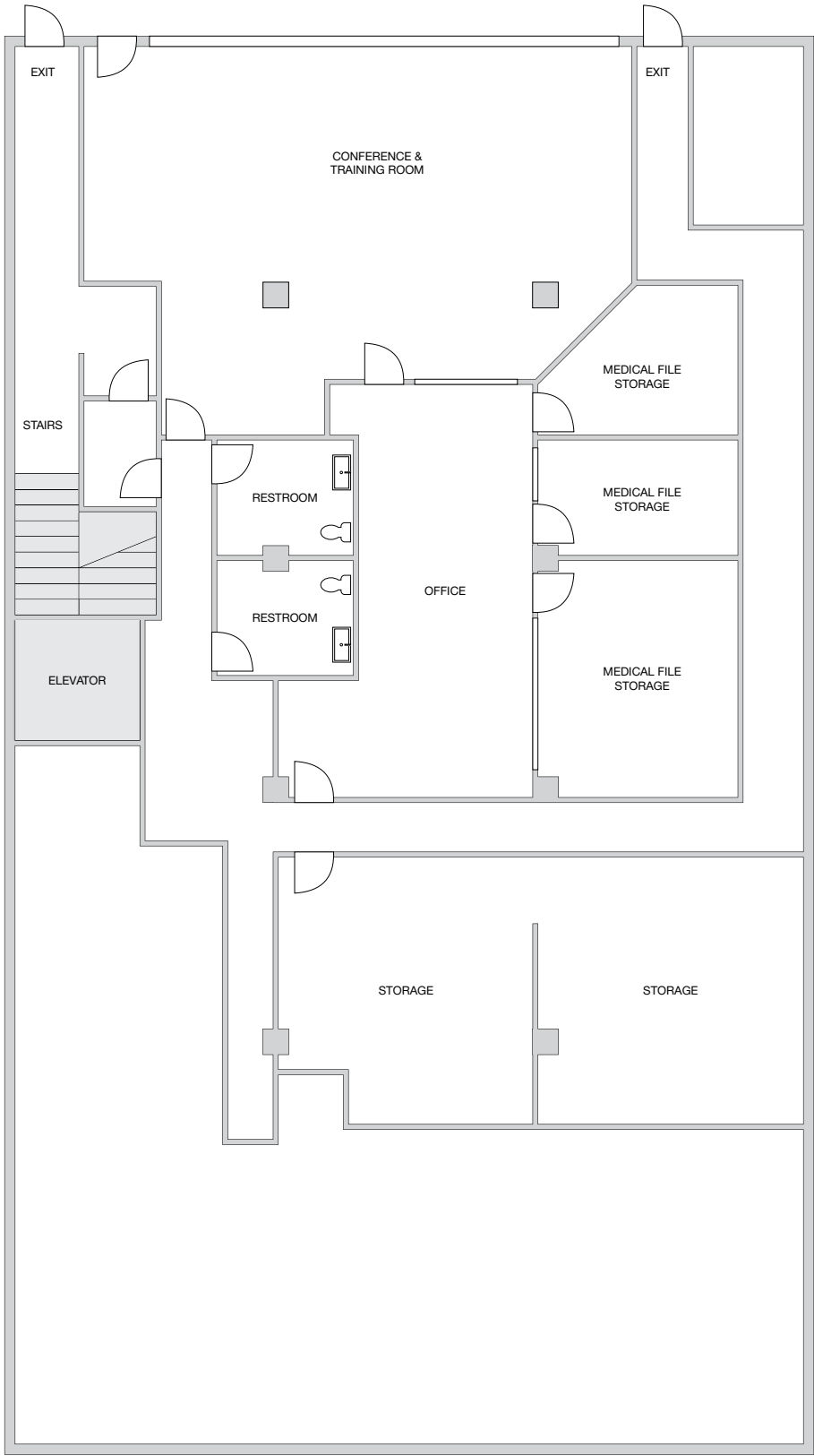


FILLMORE STREET

The floor plans shown should not be relied on as representation, expressed or implied. Floor plans and square footage are approximate and may be more or less than the actual size or design. Prospective buyers are advised to verify all measurements in field using their own professionals.

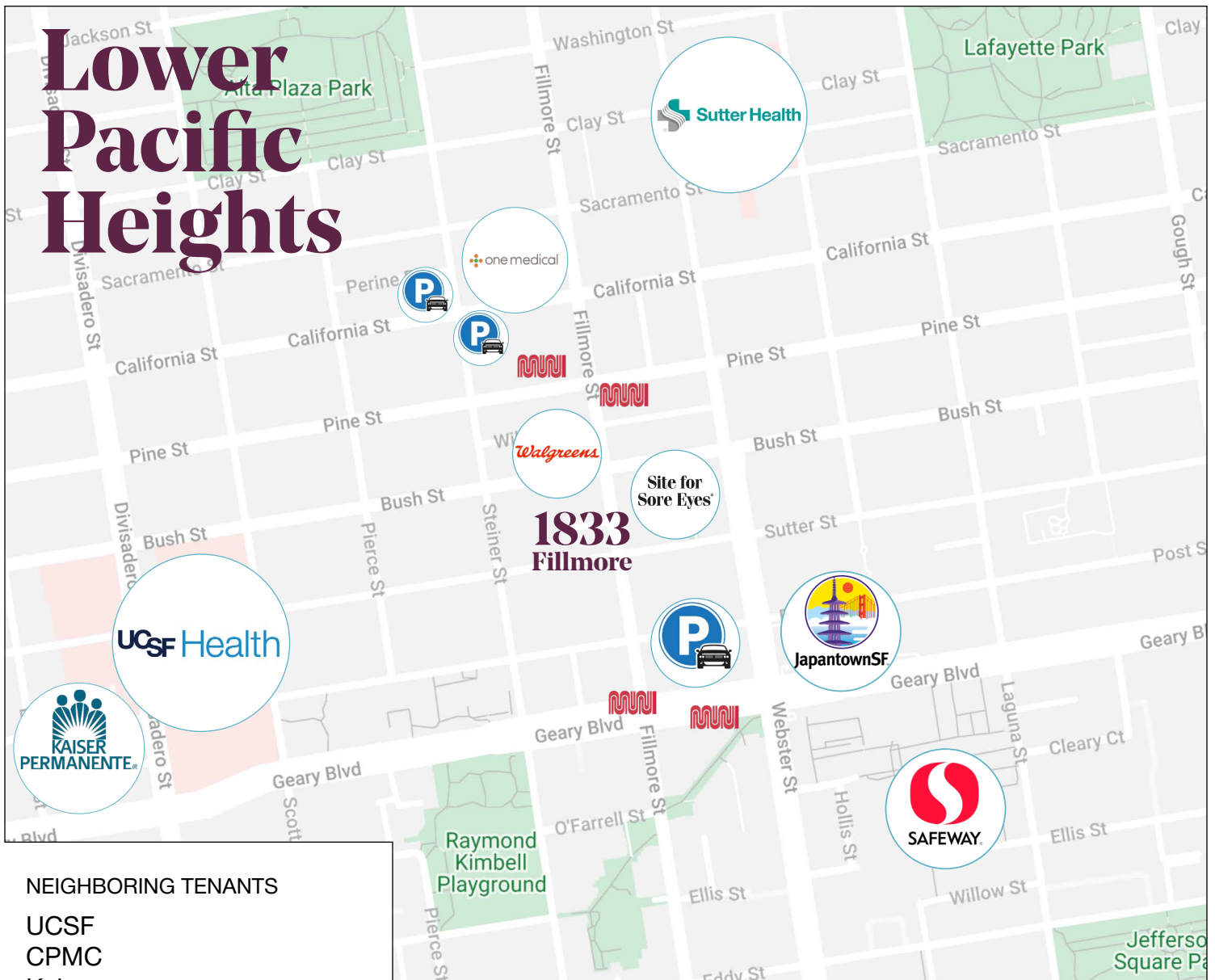
Floorplan

Lower Level
+/- 2,100 Sq Ft



FILLMORE STREET

The floor plans shown should not be relied on as representation, expressed or implied. Floor plans and square footage are approximate and may be more or less than the actual size or design. Prospective buyers are advised to verify all measurements in field using their own professionals.



NEIGHBORING TENANTS

UCSF
CPMC
Kaiser
Sutter Health
One Medical
SF Medical Group

URBANGROUP
REAL ESTATE

OFFICE

LOUIS CORNEJO

Office: 415.863.1775

Direct: 415.786.3662

Email: louis@urbangroupsf.com

BRE 01518102/01885834